



Meridian Solar Farm

EN010169

Volume 6

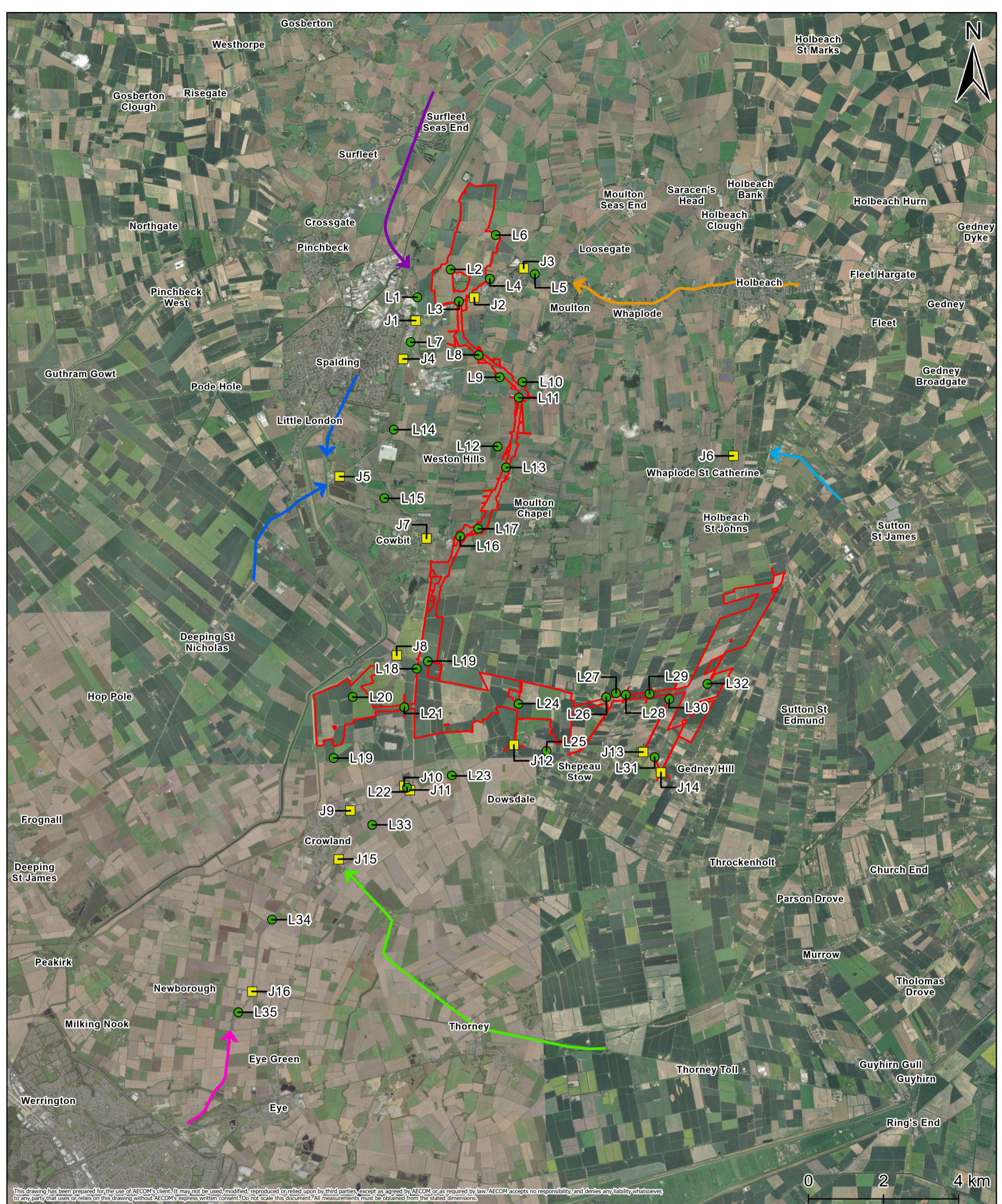
Environmental Statement

6.2 ES Figure 15-5: Staff Trip
Route

APFP Regulation 5(2)(a)

Infrastructure Planning (Applications:
Prescribed Forms and Procedure)
Regulations 2009

March 2026



This drawing has been prepared for the use of AECOM's client. It may not be used, modified, reproduced or relied upon by third parties, except as agreed by AECOM or as required by law. AECOM accepts no responsibility, and denies any liability whatsoever, to any party that uses or relies on this drawing without AECOM's express written consent. Do not scale this document. All measurements must be obtained from the stated dimensions.

Project Title Meridian Solar Farm			
Map Title Environmental Statement Figure 15-5: Staff Trip Routing			
Scale 1:90,000	Version 0	Drawn LL	Reviewed AK

Legend	Order Limits	→ A151
Traffic Receptor	→ B1165	→ A47/B1040
Junction	→ A16 South	→ A16 North
Link	→ A1175	
Traffic Route		

Date: 20/03/2026

Copyright
Earthstar Geographics, Contains OS data © Crown Copyright and database right 2026. Contains data from OS Zoomstack. Reproduced from Ordnance Survey digital map data © Crown copyright 2025. All rights reserved. Licence number AC0000808122.

Meridian Solar

